



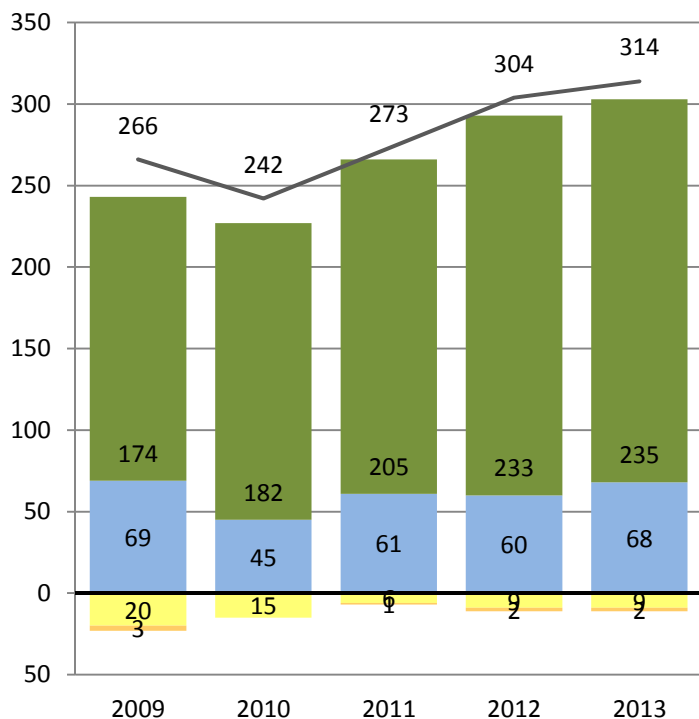
PERFORMANCE LEVELS BY GRADE REPORT

Torrey Pines - All Grades Combined
California Standards Test 2009-2013

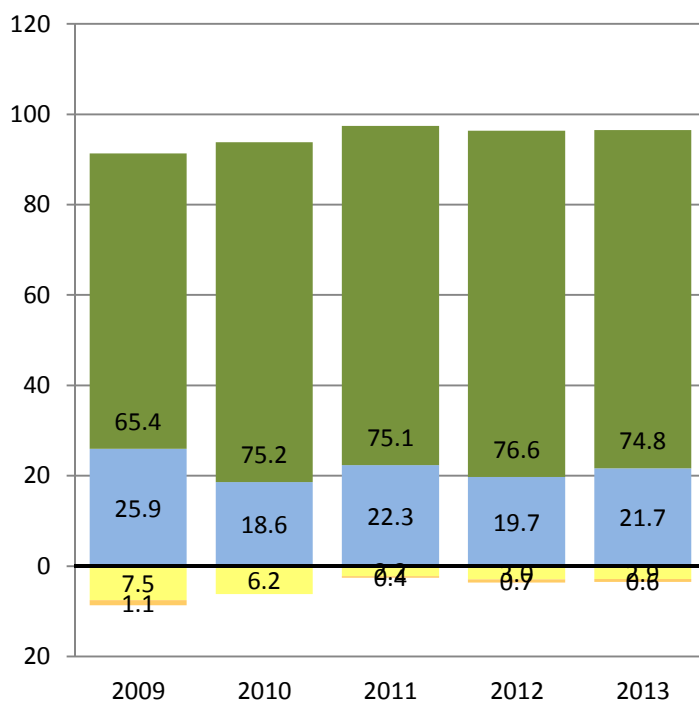
Research and Reporting
Department

ENGLISH LANGUAGE ARTS

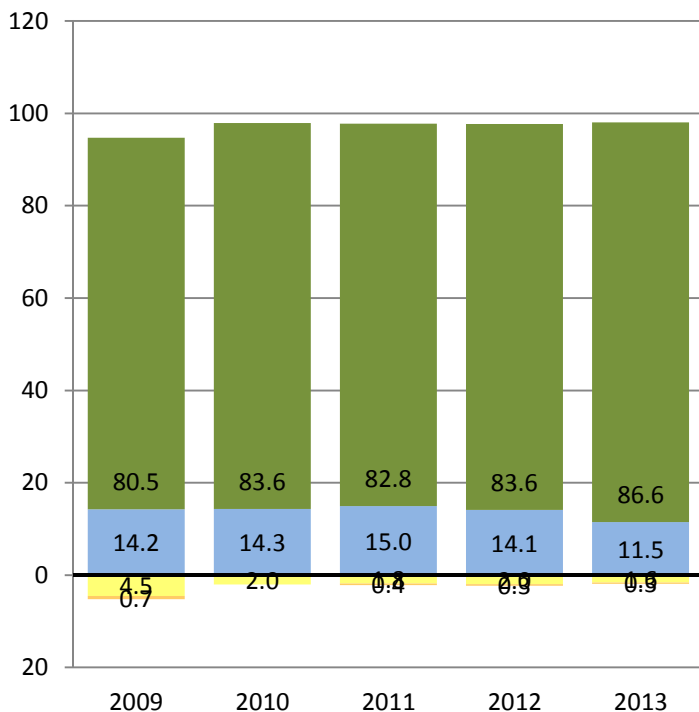
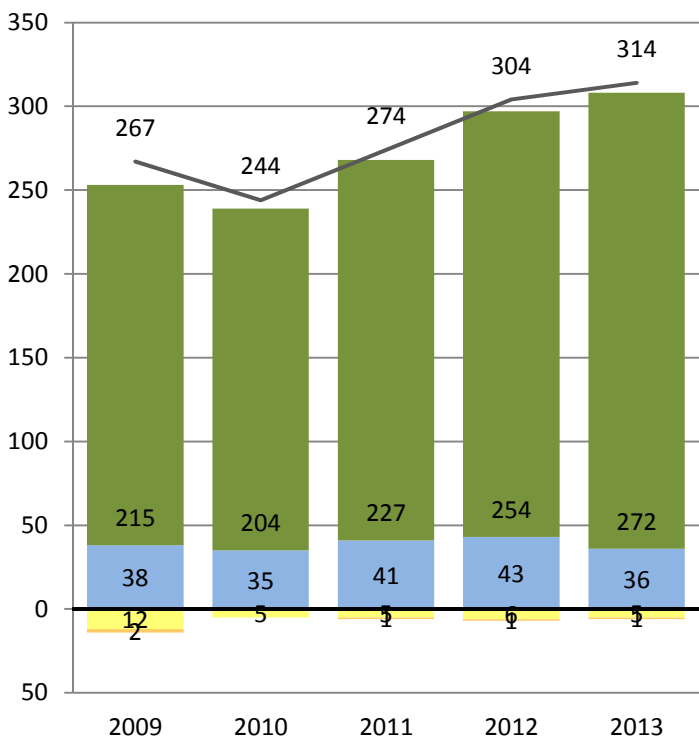
Number of Students at Each Performance Level



Percent of Students at Each Performance Level



MATHEMATICS



■ Far Below Basic
 ■ Below Basic
 ■ Basic
 ■ Proficient
 ■ Advanced

— Total Number of Students Tested



PERFORMANCE LEVELS BY GRADE REPORT

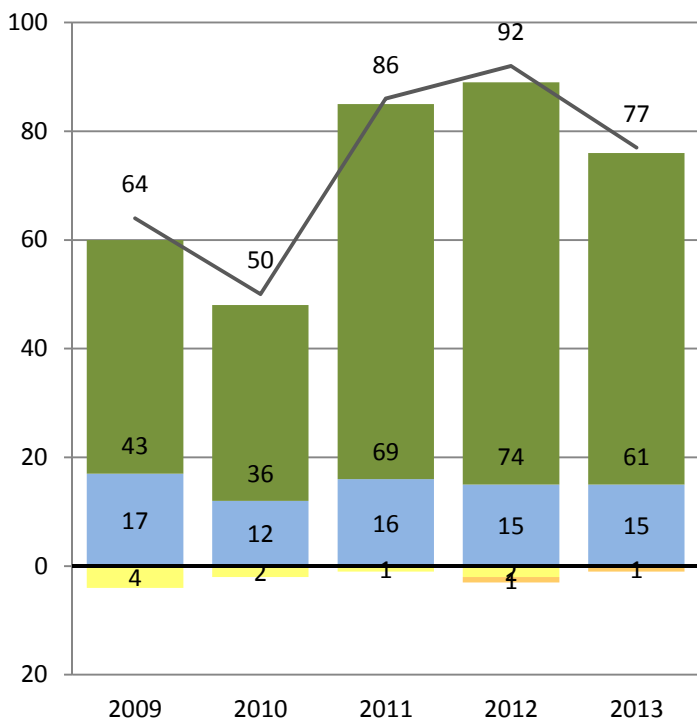
Research and Reporting
Department

Torrey Pines- Grade 2

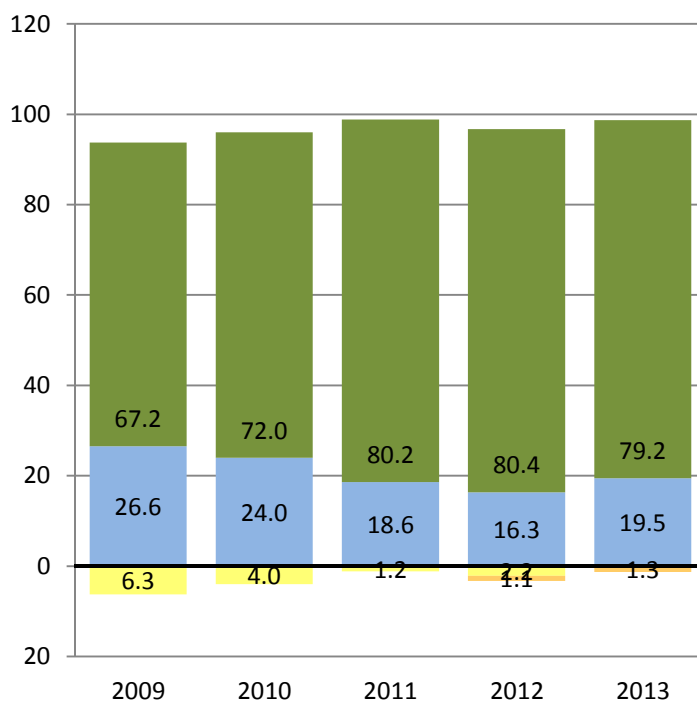
California Standards Test 2009-2013

ENGLISH LANGUAGE ARTS

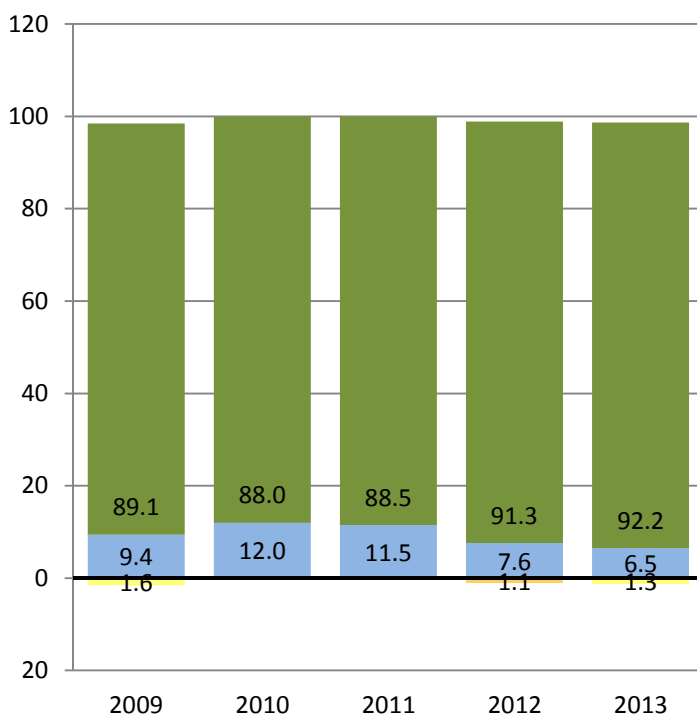
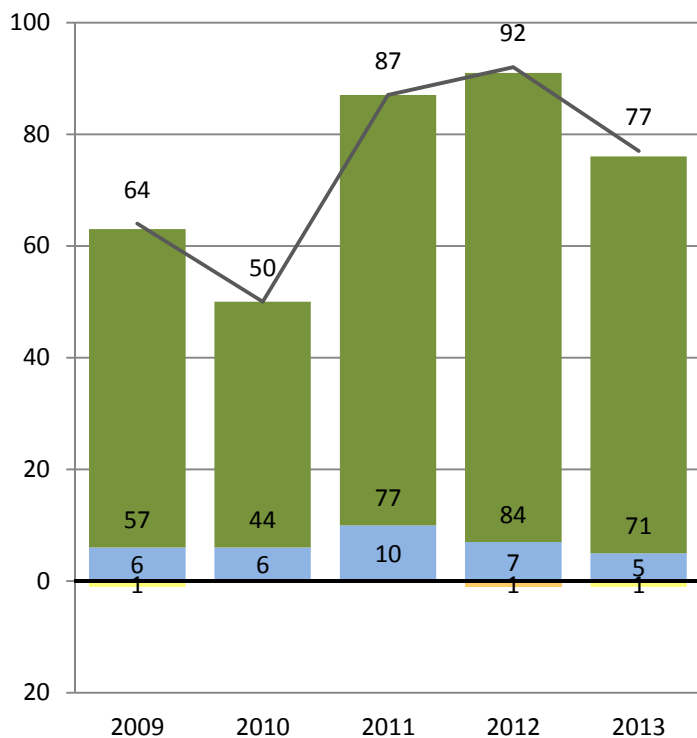
Number of Students at Each Performance Level



Percent of Students at Each Performance Level



MATHEMATICS



Far Below Basic Below Basic Basic Proficient Advanced

— Total Number of Students Tested



PERFORMANCE LEVELS BY GRADE REPORT

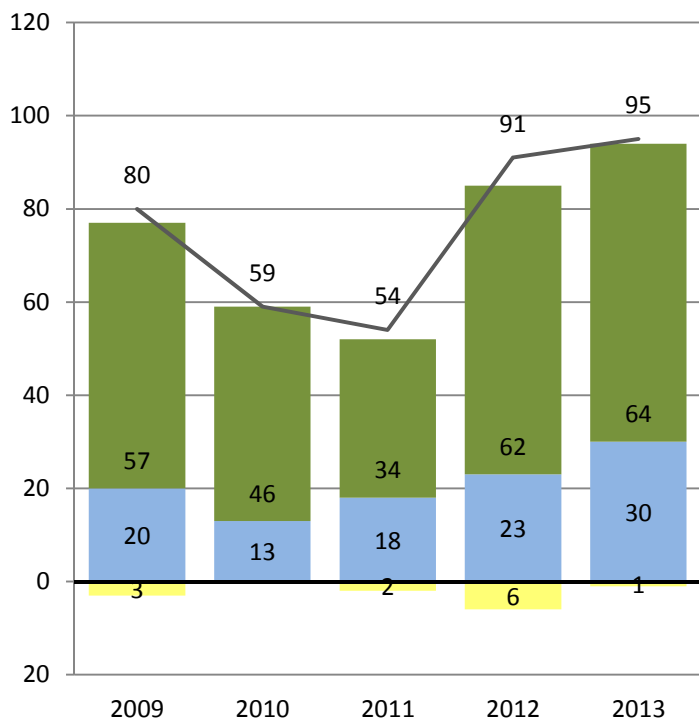
Research and Reporting
Department

Torrey Pines- Grade 3

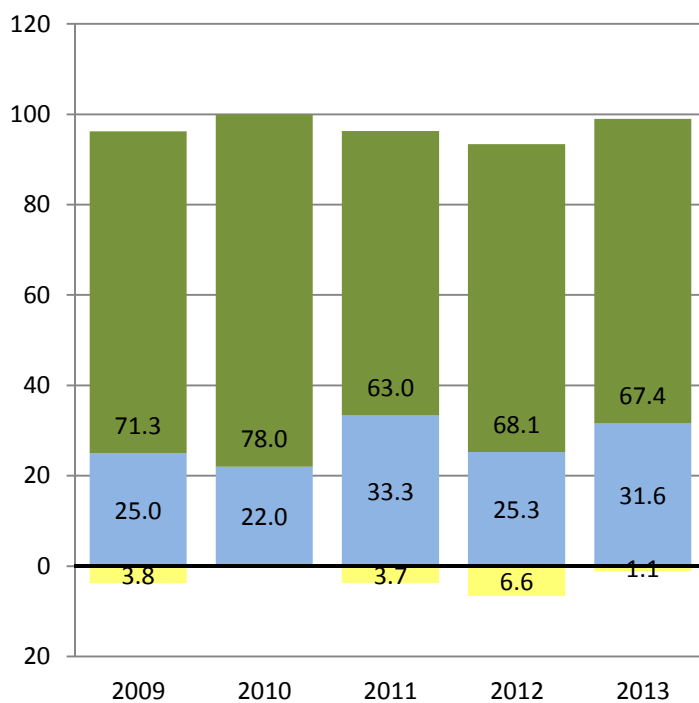
California Standards Test 2009-2013

ENGLISH LANGUAGE ARTS

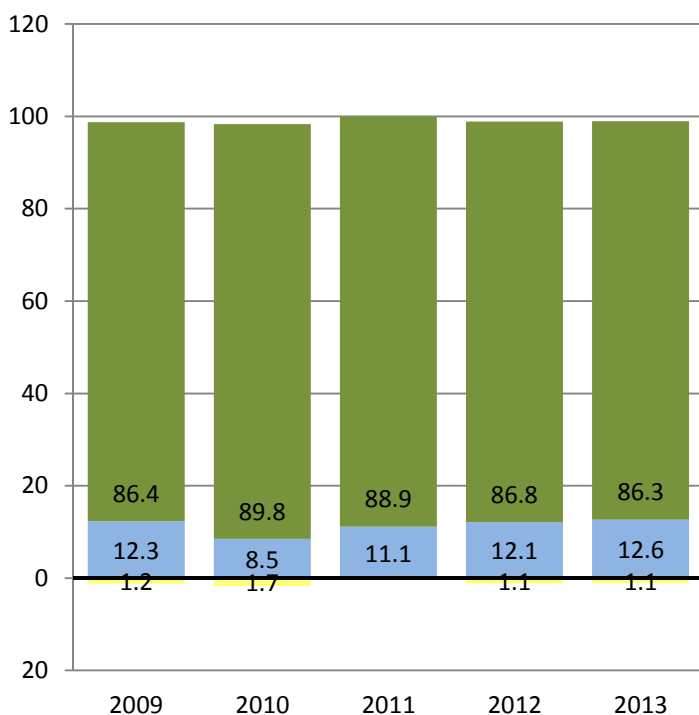
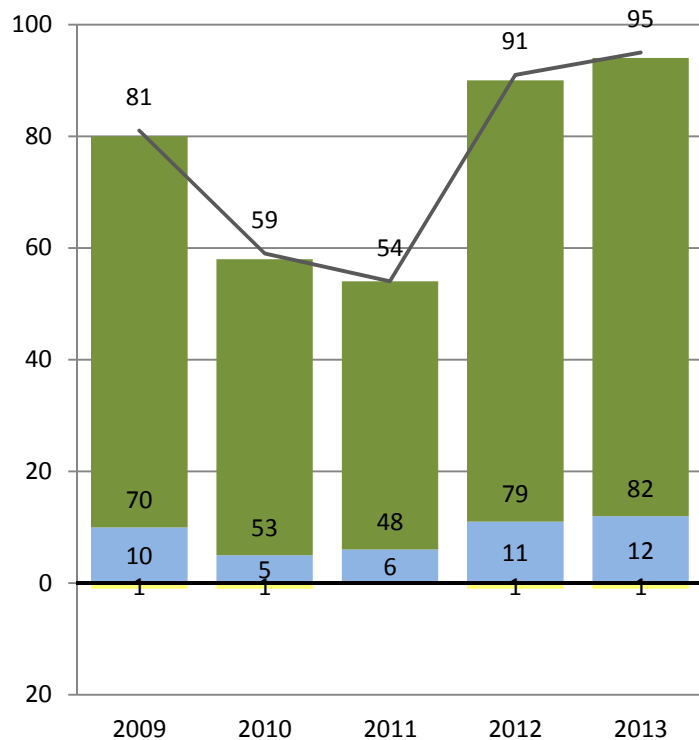
Number of Students at Each Performance Level



Percent of Students at Each Performance Level



MATHEMATICS



Far Below Basic Below Basic Basic Proficient Advanced

— Total Number of Students Tested



PERFORMANCE LEVELS BY GRADE REPORT

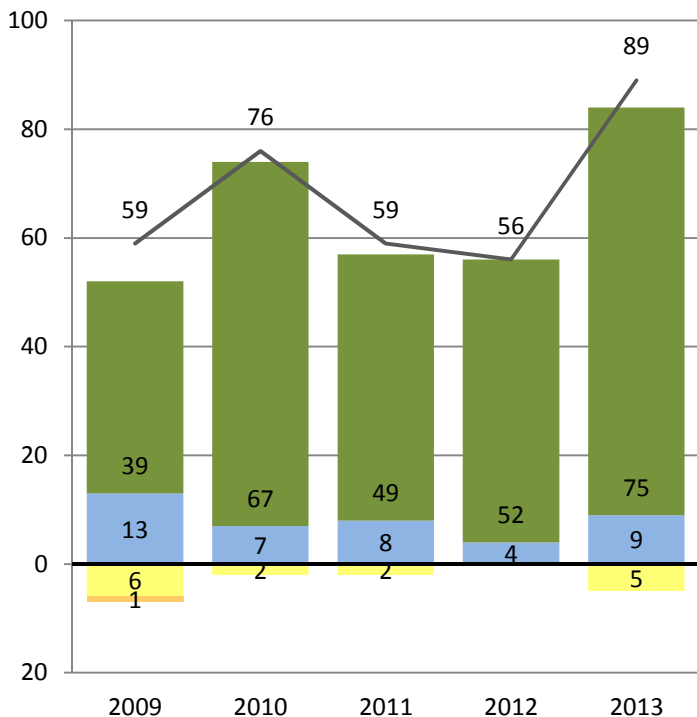
Research and Reporting
Department

Torrey Pines- Grade 4

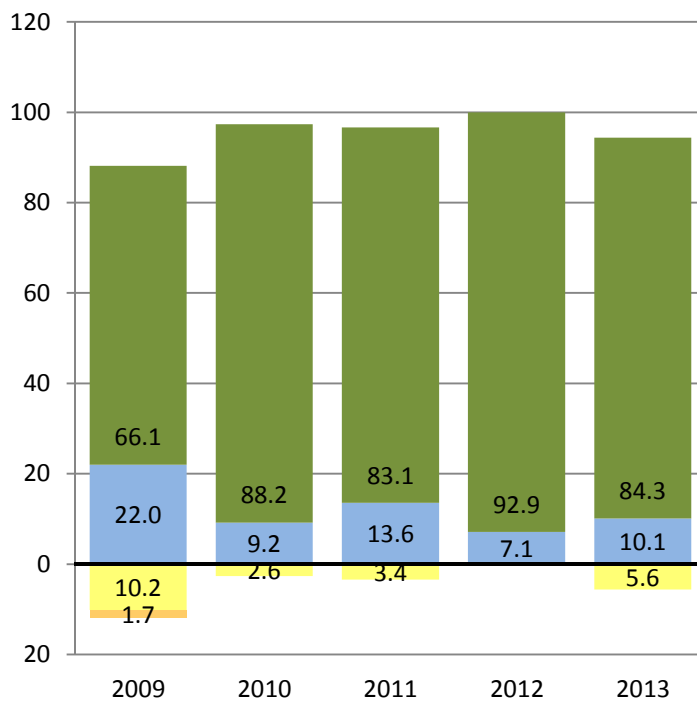
California Standards Test 2009-2013

ENGLISH LANGUAGE ARTS

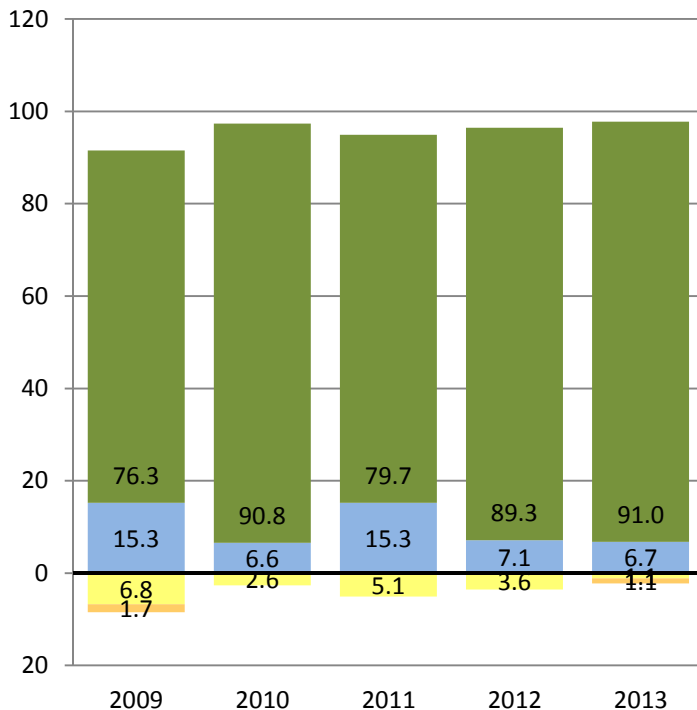
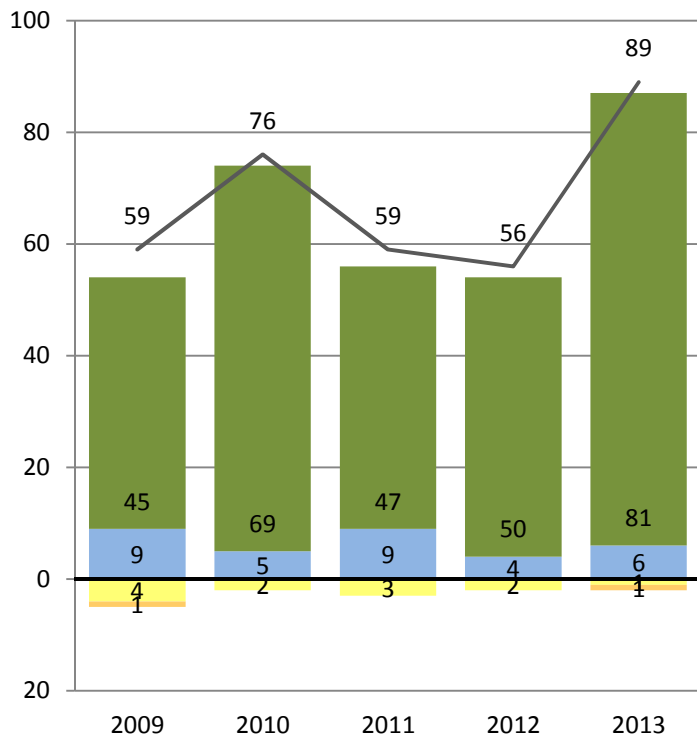
Number of Students at Each Performance Level



Percent of Students at Each Performance Level



MATHEMATICS



■ Far Below Basic
 ■ Below Basic
 ■ Basic
 ■ Proficient
 ■ Advanced

— Total Number of Students Tested



PERFORMANCE LEVELS BY GRADE REPORT

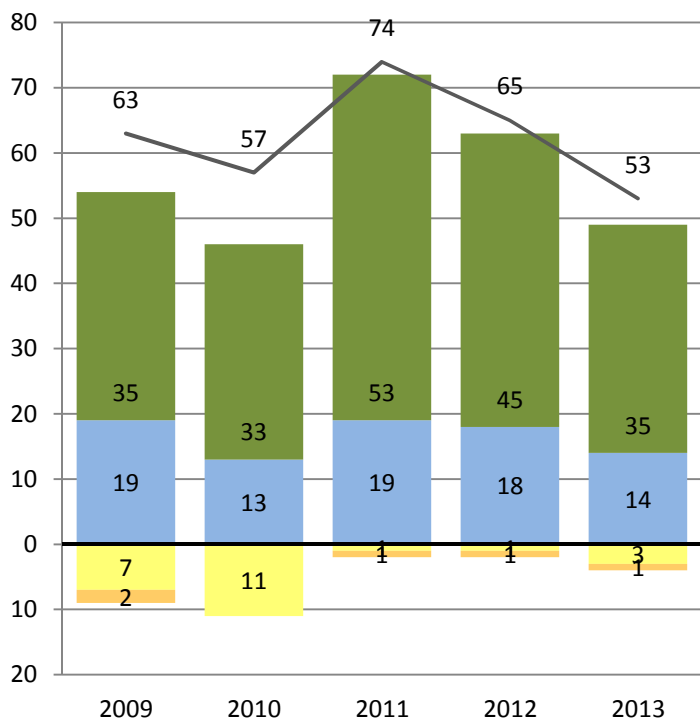
Research and Reporting
Department

Torrey Pines- Grade 5

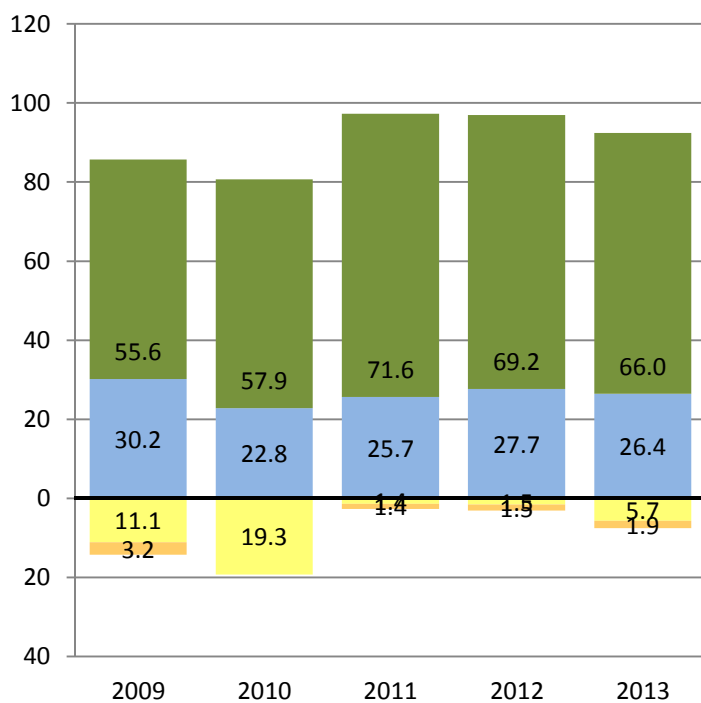
California Standards Test 2009-2013

ENGLISH LANGUAGE ARTS

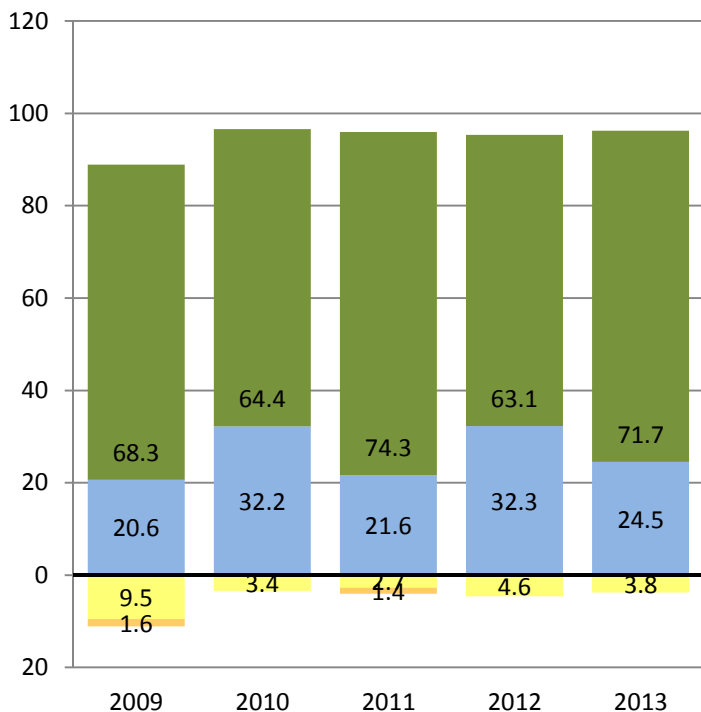
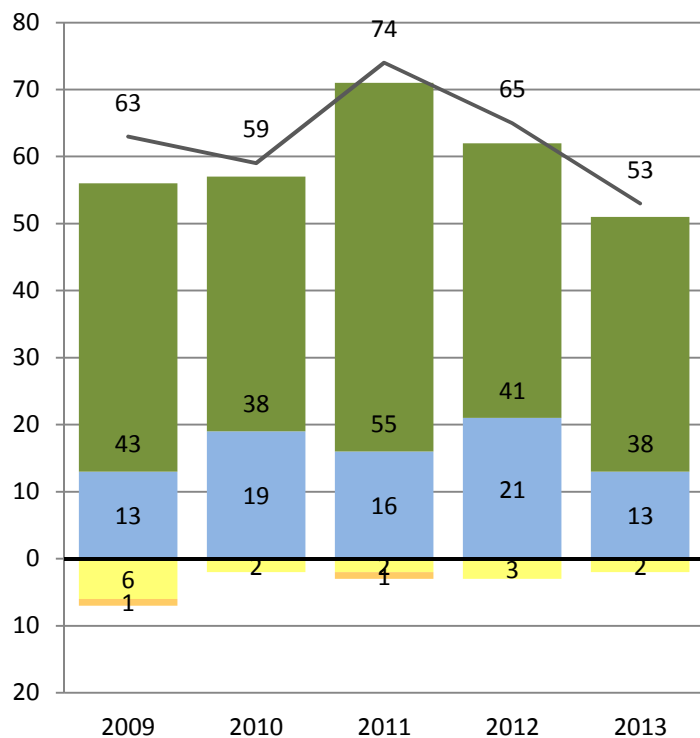
Number of Students at Each Performance Level



Percent of Students at Each Performance Level



MATHEMATICS



■ Far Below Basic
 ■ Below Basic
 ■ Basic
 ■ Proficient
 ■ Advanced

— Total Number of Students Tested