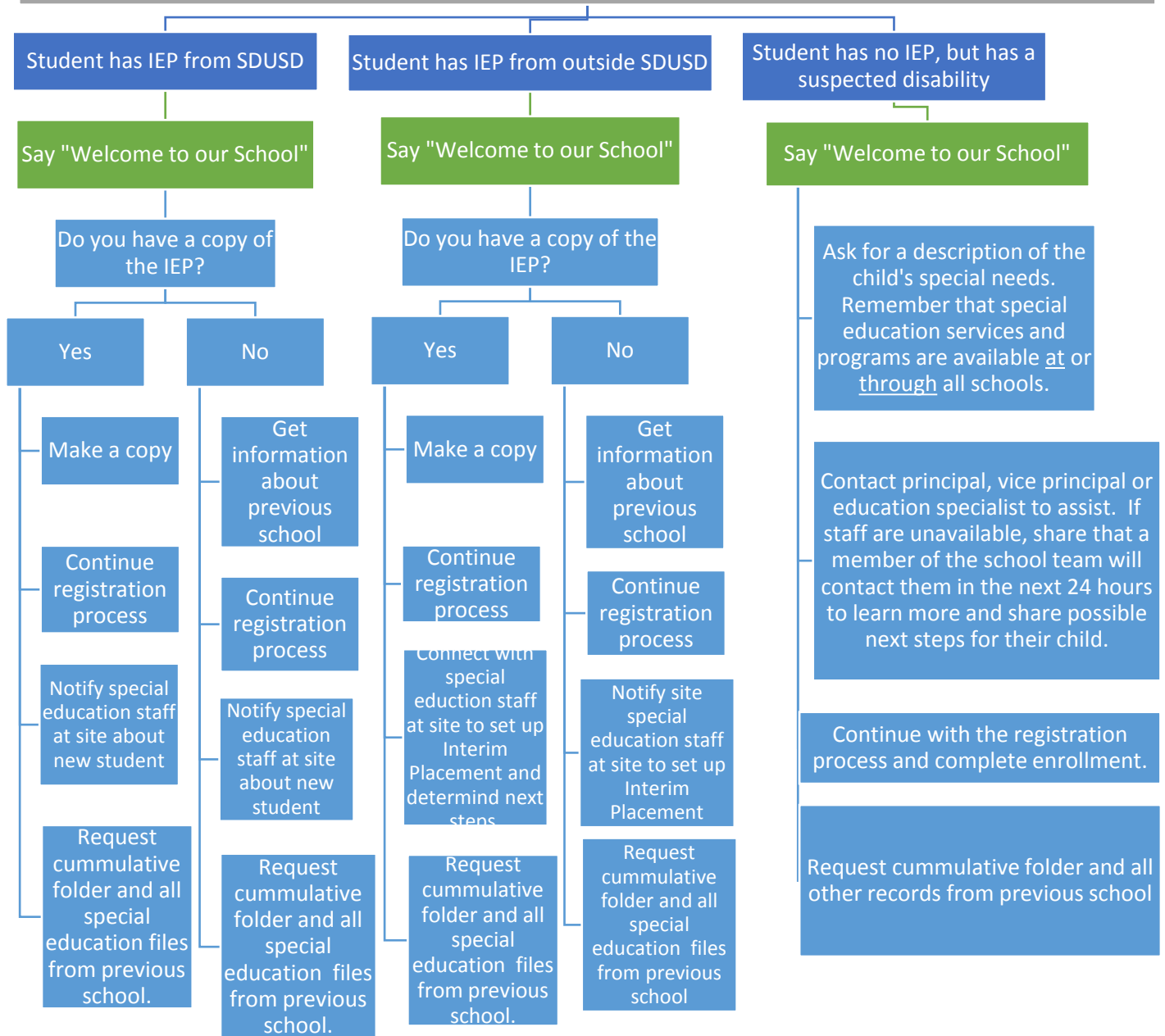


Welcome to Our School

A guide for office staff to provide a positive experience while assisting parents/guardians of students with disabilities. Welcome the family to your school and/or San Diego!



This flowchart is intended to support Enrollment Clerks who are enrolling students with Individual Education Plans and/or a suspected disability.

If the IEP indicates the need for a Low Incidence program or a program not located on your campus (such as a Moderate/Severe classroom, Physical Health Impairment, Medically Physically Challenged, Deaf Hard of Hearing, and/or Visually Impaired), please work with your Site Special Education staff to work with the Special Education Central Office Personnel.

Need Assistance? Please Call:

Special Education Division

(619) 725-7700

8/4/17