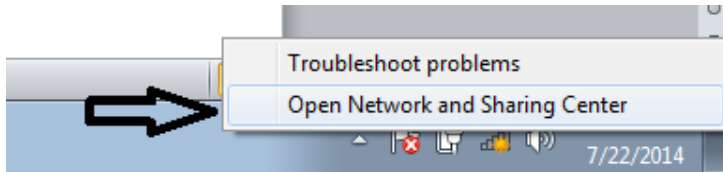


Connecting a Personal Windows 7 Computer to the HCDE RADIUS Network.

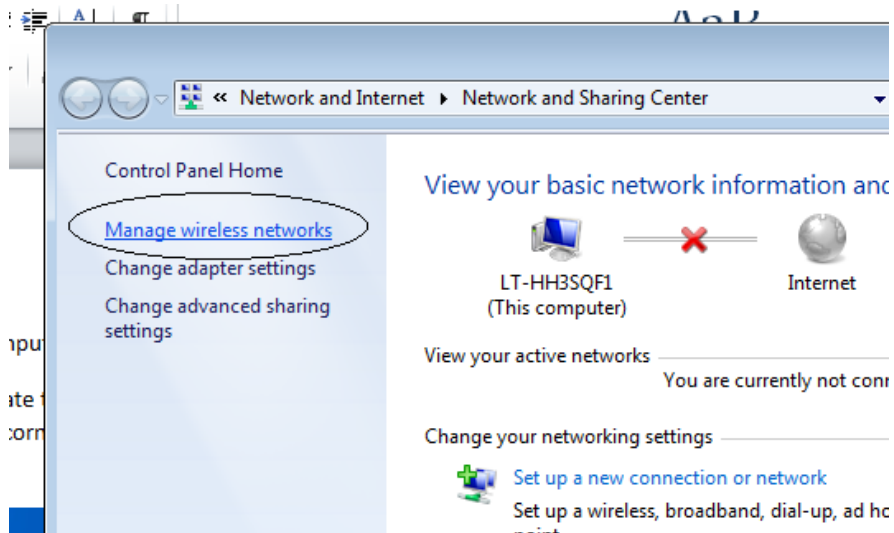
1. Log into the computer and locate the wireless network icon in the taskbar. It is usually to the left of the clock in the lower right corner. It may have an asterisk on it which indicates that wireless networks are available.



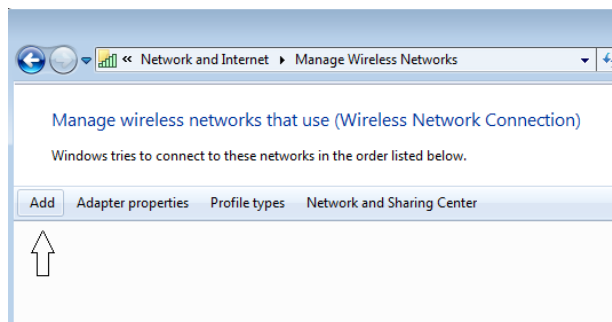
2. Right Click the icon and choose Open Network and Sharing Center.



3. From the menu on the left side of the window, choose Manage Wireless Networks.



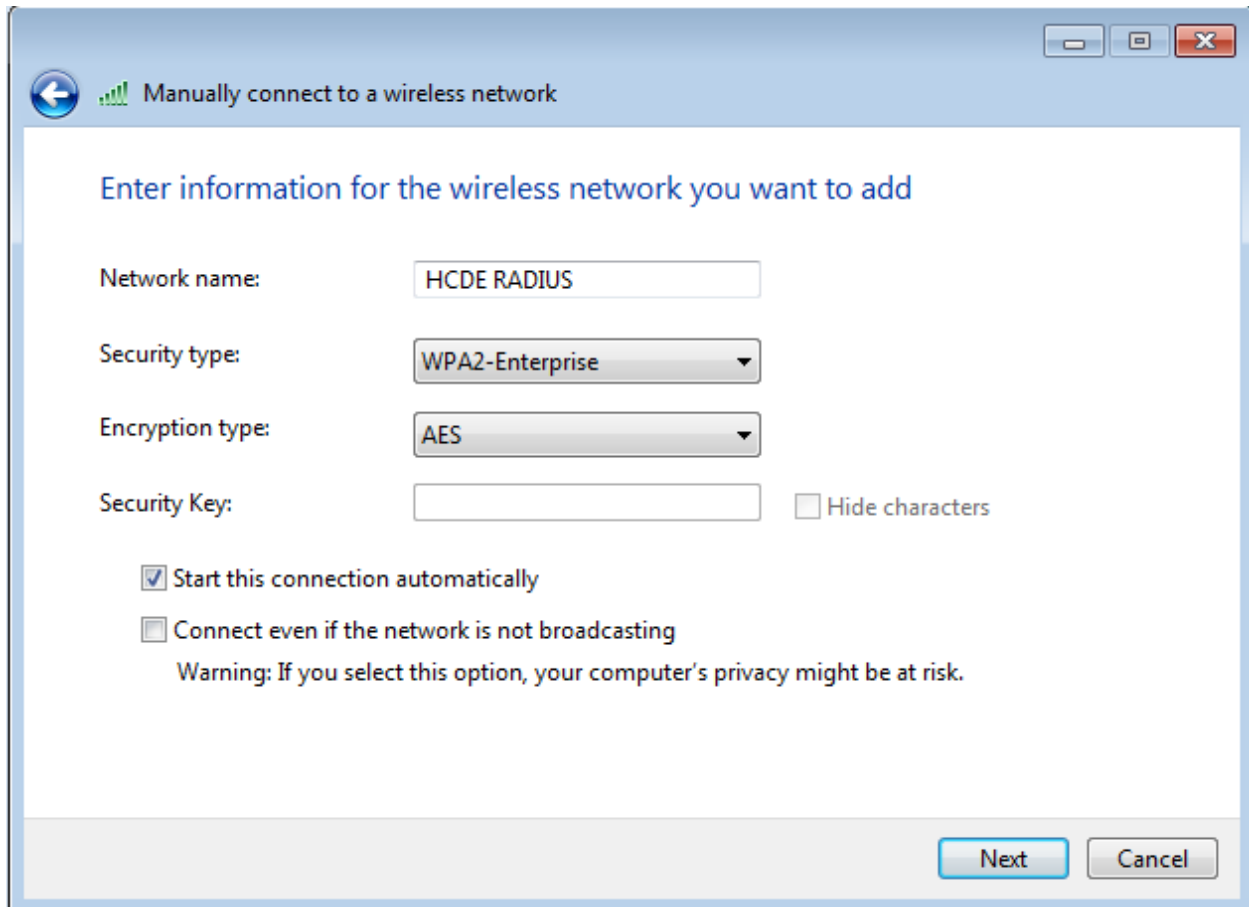
4. Click Add.



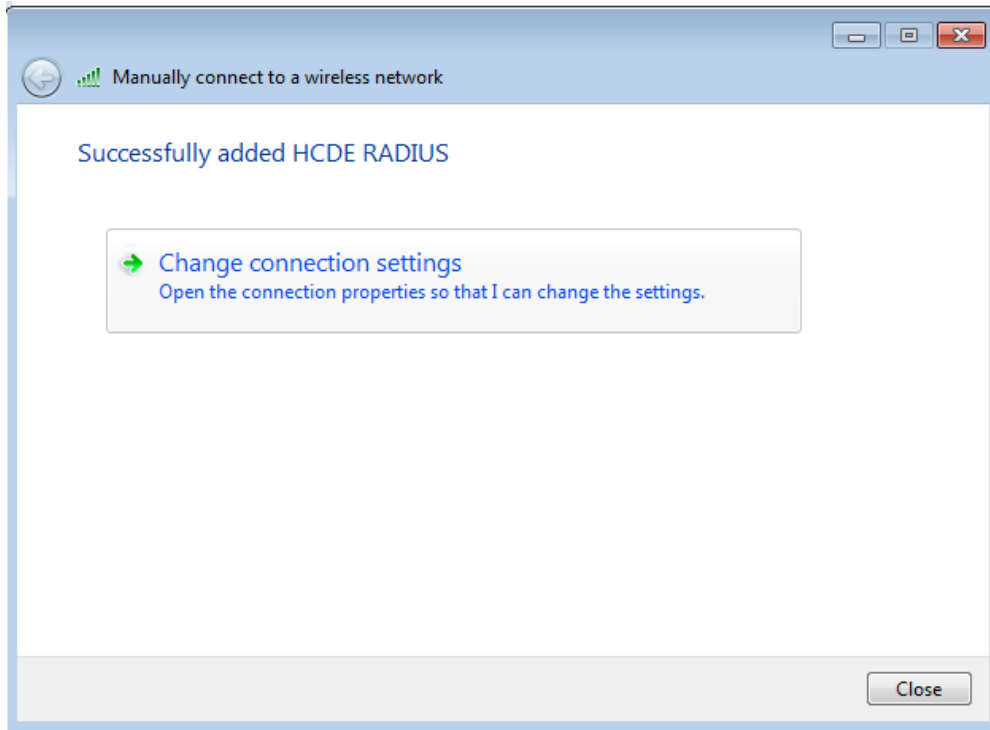
5. Choose to Manually Create a Network Profile.



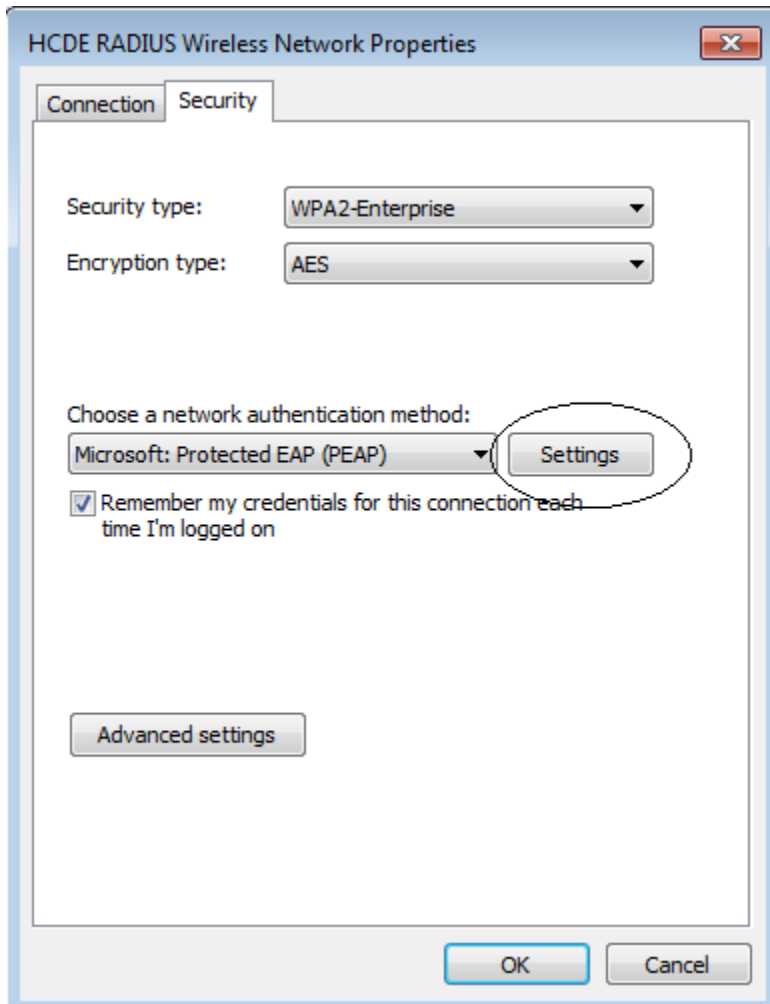
6. Enter the following values and click Next (HCDE RADIUS should be in all caps).win



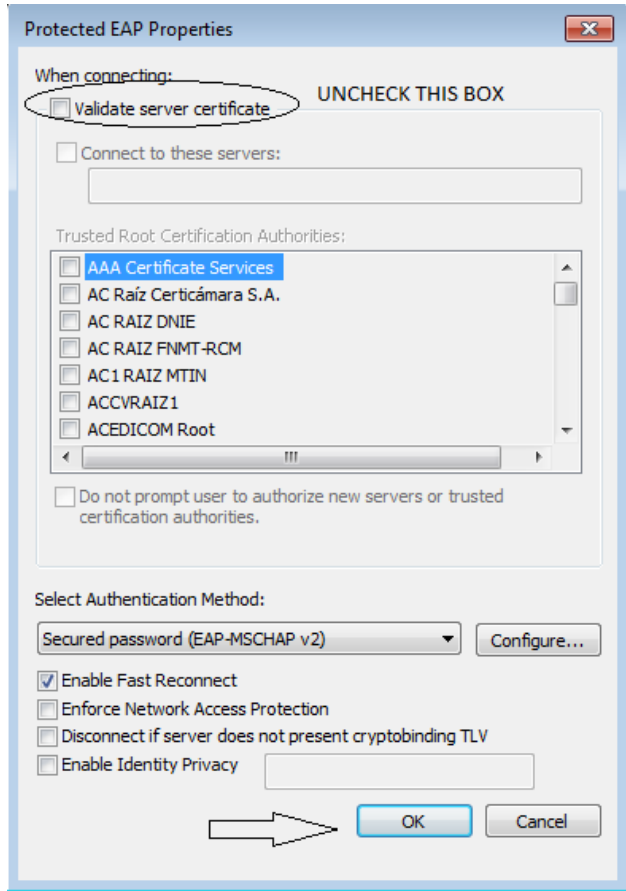
7. Choose the options to Change connection settings.



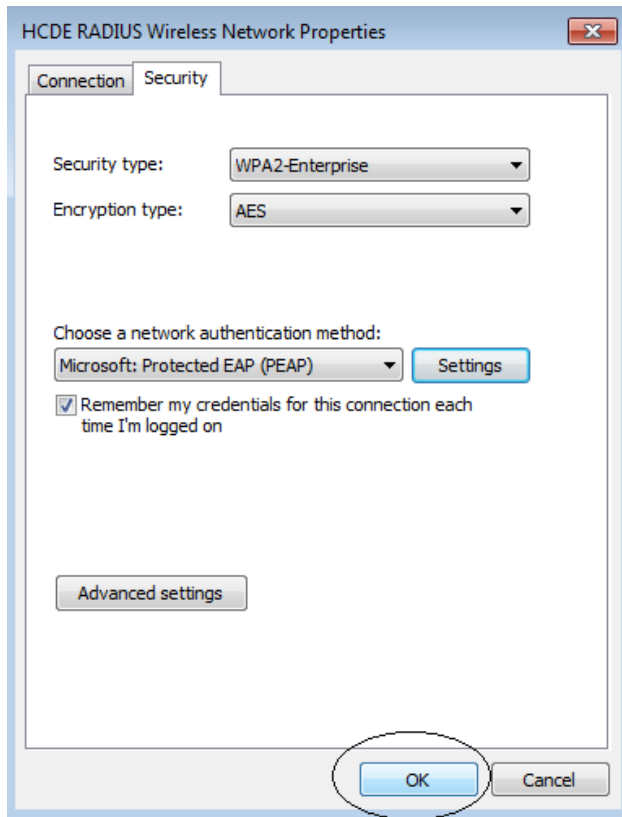
8. When the Properties window for HCDE RADIUS opens, click the Security tab and then click the Settings button to the right of Microsoft: Protected EAP (PEAP).



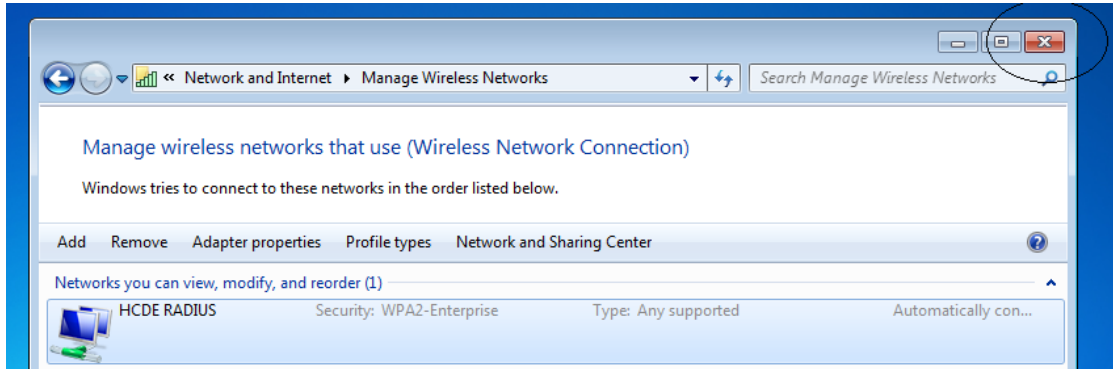
9. Uncheck the Validate server certificate box and click OK.



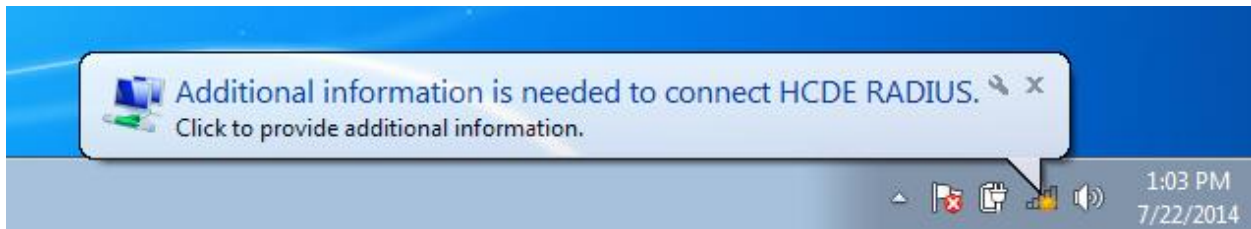
10. Click OK to close the HCDE RADIUS Wireless Network Properties window.



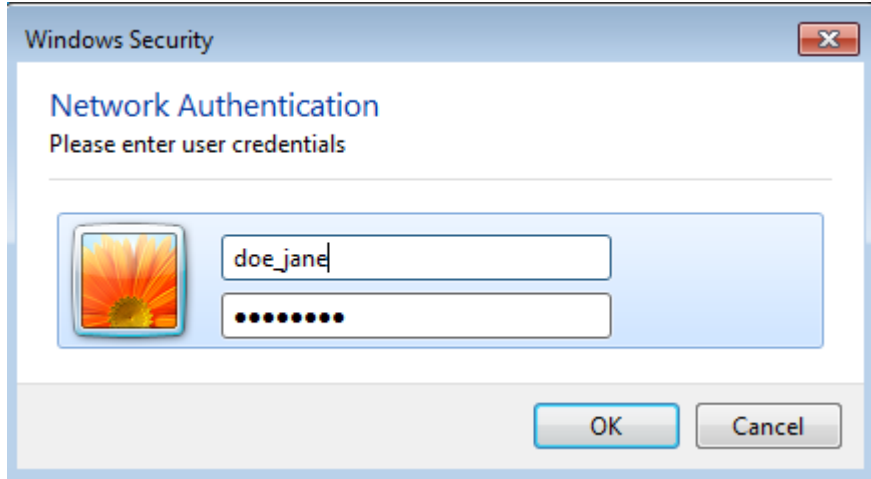
11. Click the X to close the Manage Wireless Networks window.



12. You should get a message asking for additional information to connect to HCDE RADIUS. Click the bubble.



13. You will be prompted for a username and password. *Please enter **your** domain account information.* This is the part of your email address that comes before @hcde.org (Example: Jane Doe's email account is doe_jane@hcde.org. Therefore, her domain account is doe_jane) Use the same password you use for email.



Click OK.

14. If your username and password are valid, you should now be connected to HCDE RADIUS.



If you have difficulty connecting your personal laptop to the HCDE RADIUS wireless network, please see your building's Technical contact or email helpdesk@hcde.org.