



COMSEWOGUE SCHOOL DISTRICT COVID-19 PROTOCOLS

LAST UPDATED: AUGUST 17, 2021

FACILITY MAINTENANCE

The Comsewogue School District will continue the 2020-2021 procedures regarding disinfection and cleaning in the 2021-2022 school year.

- Electrostatic sprayers to spray all common areas, high traffic areas and all classrooms
- Wipes to be provided for each classroom
- Increased custodial support
- Hand sanitizers and hand-washing protocols will be followed
- Logs will be maintained that include the date, time and scope of cleaning
- HVAC Systems were upgraded with filters and air exchange to ensure air circulation
- Continue open windows for fresh air
- Hand sanitizers installed throughout building hallways and classrooms
- Signs installed throughout all facilities reminding and teaching about hand-washing and social distancing protocols



TRANSPORTATION



BUS / VAN

- All students and staff will wear masks
- Students will sit in marked seats based only on the drivers' discretion and board the bus from back to front
- Students will exit the bus from front to rear
- The bus will be sanitized before heading back out for a second pick-up





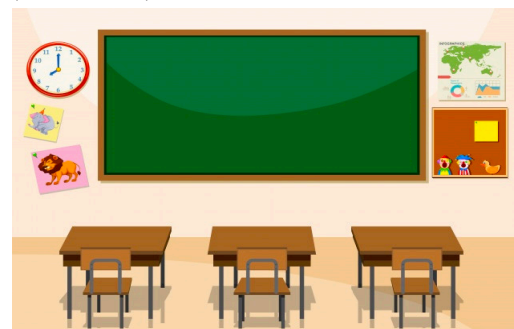
ARRIVAL AT SCHOOL



- All students and staff members will be required to wear masks during arrivals and in the hallways
- Parents will not be allowed to walk their child(ren) into the building
- If a student has a temperature exceeding 100.0F, or is showing any signs or symptoms of illness, that child will remain with their parent and go back home; siblings not exhibiting any symptoms may remain in school

CLASSROOMS

- Classrooms will be set up so that desks are 3-6 feet apart; as per DOH guidelines, students' desks are measured student head to student head
- Students and teachers will be expected to wear masks at all times when they are unable to socially distance 6 or more feet apart, in common areas, including but not limited to: busses, hallways, bathrooms, etc.
- Students will have access to hand sanitizer in each classroom and hallways
- Students will be encouraged to wash their hands frequently throughout the day as well as sanitize hands periodically
- Windows in classrooms should be open whenever possible to allow fresh air in
- Social-Emotional concerns regarding COVID-19 will continue to be addressed



HALLWAYS

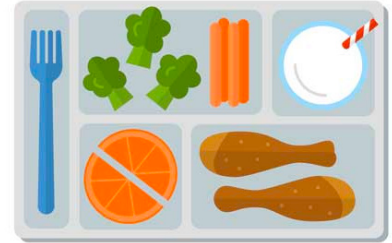
- 3-6 feet of separation between students should be maintained in the hallways whenever possible.
- Masks should be worn at all times in the hallway
- When leaving a classroom to use the bathroom or visit the nurse, students should be signing in and out of a log book



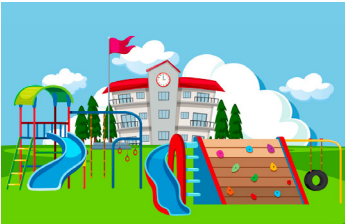


LUNCH

- Students will eat at individualized stations, 6 feet apart
- Lunch spaces will be disinfected between lunch periods
- No sharing or exchanging of food will be allowed



OUTDOOR RECESS



- Students will need fresh air and outdoor recess is encouraged
- Masks are not required outdoors
- All students will wear masks upon the re-entering of any building

PHYSICAL EDUCATION CLASS

- Students must maintain 3-6 feet of separation at all times in physical education class, based on the activity
- All equipment will be sanitized between periods
- Masks are required during indoor P.E.



ISOLATION ROOM

- There is a planned isolation room in each building
- Anyone showing symptoms of COVID-19 during the school day will be placed in this room, not the nurse's office
- Any signs of illness and temperature of 100.0F or above, the student or adult will be sent home immediately
- If there are concerns of COVID-19, the school nurse will inform the health department
- If someone in a classroom tests COVID-19 positive, families of any student within three feet, unmasked for over 10 minutes in the classroom will be informed





DISMISSAL

- Elementary students will be lead outside by grade maintaining 3-6 feet of separation
- Masks will be worn at all times during dismissal



BEFORE & AFTERCARE

- Will be in each elementary building of attendance
- 3-6 feet of separation will continue in classrooms during aftercare
- If students go outside for recess, follow recess procedures listed above
- Any student who needs to use the bathroom must sign a log book when leaving/returning



AFTERCARE PICKUP

- No parents will be allowed to enter the building; child will be called to the front for pickup
- All pickups will be done in designated areas

OUTSIDE VISITORS / MATERIAL DROP-OFF

- Any items dropped off for a student (lunch, books, etc.) will be left in the security vestibule and a staff member will bring the item(s) to the child

